



Product Overview



Extended management of Bals Elektrotechnik GmbH & Co. KG: Hubertus Fischer, Wolfgang Bals, Johannes Ramm and Piotr Komor (left to right).

About half a century competence and experience

Bals stands worldwide as a quality brand for innovation, reliability and service. For more than 60 years, we have been producing CEE plugs and connectors for the world markets. From day one we have focussed on the highest level of quality "Made in Germany". Our factories in Kirchhundem-Albaum and Freiwalde have highly skilled and motivated teams, the very latest manufacturing facilities

and a highly efficient logistics system.

Our product portfolio ranges from plugs, phase inverters, connectors, sockets outlets and combinations units to charging plugs and sockets for electrical vehicles. Numerous certifications from German and foreign certification institutes, as well as registered designs and patents, document the high technical standard of our products.



Two modern factories a consistent quality standard

From the beginning the headquarters of our company is located in Kirchhundem-Albaum (North-Rhine-Westphalia). Product development, marketing and sales, as well as administration are located here. In addition, plug and socket systems and special products are manufactured in the Kirchhundem-Albaum factory. The factory in Freiwalde (Brandenburg), built in 1994 and expanded many times since, has state-of-the-art production facilities for fully-automatic manufacturing of unique CEE plugs and connectors as well as a highly-effective logistics centre.



CEE plugs and connectors for the world market

As an independent, medium-sized, family-owned company, we produce standardised industrial plugs and sockets acc. to IEC 60309 1-2 as well as plug and socket systems, distributors and components for the infrastructure of electrical vehicles. We set new technical standards with innovations and ground-breaking, partially patented new developments such as MULTI-GRIP or QUICK-CONNECT. The export rate in excess of 50 percent shows: Our solutions are highly valued around the world. Our products are sold in more than 80 countries. Subsidiaries and exclusive partners in strategically important countries only sell our products.



Customer proximity: You can rely on us

Always close to the customers. For us, this is no empty phrase but reality. Flexibility, customer orientation and the ability to quickly respond to short-term requirements are a matter of course for us. For this reason, integrated production - from the product idea and design to tool making and production to the shipment of the products - is optimised for short processing paths and the fastest response times.



Motivated employees ensure your satisfaction.

People make the difference

200 employees, who are dedicated and tightly connected to the company, have only one goal: to satisfy you, our customers, one hundred percent. This applies to the highest of quality standards

that we apply to our product and also for made-to-measure service and personal contact from person to person.



Our responsibility to the highest quality

Quality does not permit any compromise. This has always been the maxim at Bals. The ISO-9001-certified production process in all factories ensures the well-known high product quality. This proof of quality is reflected in patents, certificates from German and foreign testing institutes, as well as the specification of Bals products by highly renowned companies. Innovation is an important quality benchmark for us. This way, we are always setting new standards with intelligent solutions that bring the user sustainable advantages.



Our responsibility to the environment

We know and love our region. Maintaining and protecting this unique landscape for future generations is important to us. Production that saves as many resources as possible, the highest environmental standards and continual enhancement of our ecological efficiency at all levels are a matter of course for us. Every individual employee at Bals is aware of this responsibility to people and nature.



Our responsibility to people and the region

As a family-owned company, we are well aware of our special responsibility. We keep jobs safe, encourage the development of every individual and are loyal to our sites which we care for and permanently develop in the long term. Thinking about the future is also important to us: For this reason, we create qualified training positions in a wide variety of professional areas each year. We support numerous local meetings and events and employ an above average number of people with handicaps.

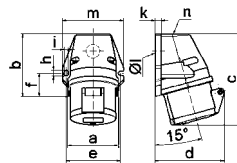
QUICK-CONNECT Surface Mounting Socket Outlet

- Screwless terminals
- Kontex contact
- Protection degree IP44
- Cable entry 1x at top (open), 1x at bottom (closed)

 QUICK CONNECT



112001



1 MB 19

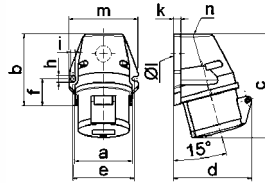
A	16	16	16	32	32	32	A	P	V	Art. No.	Qty
P	3	4	5	3	4	5					
a	59,5	72,4	72,4	79,1	79,1	79,1	16	3	230	11895	10
b	90,0	90,0	90,0	92,0	92,0	92,0					
c	130,0	130,0	131,0	142,0	142,0	142,0	16	4	400	11905	10
d	85,0	96,0	98,0	103,0	103,0	106,0					
e	62,0	77,0	77,0	84,0	84,0	84,0	16	5	400	112001	10
f	33,5	33,5	33,5	30,0	30,0	30,0					
h	9,0	9,0	9,0	9,0	9,0	9,0	32	3	230	11919	10
i	5,5	5,5	5,5	5,5	5,5	5,5					
k	8,0	9,0	9,0	9,0	9,0	9,0	32	4	400	11922	10
l	21,0	21,0	21,0	21,0	21,0	21,0					
m	72,0	87,0	87,0	94,0	94,0	94,0	32	5	400	112002	10
n	M20	M25	M25	M25	M25	M25					

Surface Mounting Socket Outlet

- Screw terminals
- Protection degree IP44
- Cable entry 1x at top (open), 1x at bottom (closed)



101



1 MB 19

A	16	16	16	32	32	32	A	P	V	Art. No.	Qty
P	3	4	5	3	4	5					
a	59,5	72,4	72,4	79,1	79,1	79,1	16	3	230	11765	10
b	90,0	90,0	90,0	92,0	92,0	92,0					
c	130,0	130,0	131,0	142,0	142,0	142,0	16	4	400	11645	10
d	85,0	96,0	98,0	103,0	103,0	106,0					
e	62,0	77,0	77,0	84,0	84,0	84,0	16	5	400	100	10
f	33,5	33,5	33,5	30,0	30,0	30,0					
h	9,0	9,0	9,0	9,0	9,0	9,0	32	3	230	11651	10
i	5,5	5,5	5,5	5,5	5,5	5,5					
k	8,0	9,0	9,0	9,0	9,0	9,0	32	4	400	11646	10
l	21,0	21,0	21,0	21,0	21,0	21,0					
m	72,0	87,0	87,0	94,0	94,0	94,0	32	5	400	101	10
n	M20	M25	M25	M25	M25	M25					

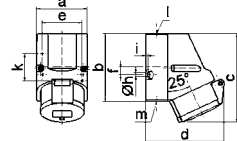
QUICK-CONNECT Surface Mounting Socket Outlet

- Screwless terminals
- Kontex contact
- Protection degree IP44
- Cable entry 1x at top (open), 2x at bottom (closed)
- Base rotatable by 180°

 QUICK CONNECT



11906



1 MB 7

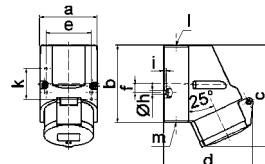
A	16	16	16	32	32	32	A	P	V	Art. No.	Qty
P	3	4	5	3	4	5					
a	64,0	75,0	75,0	83,0	83,0	83,0	16	3	230	11930	10
b	87,0	100,0	100,0	126,0	126,0	126,0					
c	117,0	129,0	131,0	155,0	155,0	155,0	16	4	400	11907	10
d	103,0	108,0	116,0	130,0	130,0	136,0					
e	51,0	59,0	59,0	68,0	68,0	68,0	16	5	400	11906	10
f	-	11,0	11,0	11,0	11,0	11,0					
h	4,1	5,1	5,1	5,5	5,5	5,5	32	3	230	11949	10
i	4,5	4,5	4,5	6,5	6,5	6,5					
k	40,0	-	-	80,0	80,0	80,0	32	4	400	11956	10
l	M20	M20	M20	M25	M25	M25					
m	f. M20	f. M20	f. M20	2xM25	2xM25	2xM25	32	5	400	11962	10

Surface Mounting Socket Outlet

- Screw terminals
- Protection degree IP44
- Cable entry 1x at top (open), 2x at bottom (closed)
- Base rotatable by 180°



103



1 MB 7

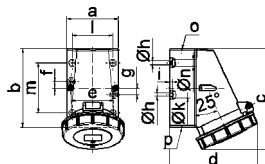
A	16	16	16	32	32	32	A	P	V	Art. No.	Qty
P	3	4	5	3	4	5					
a	64,0	75,0	75,0	83,0	83,0	83,0	16	3	230	111	10
b	87,0	100,0	100,0	126,0	126,0	126,0					
c	117,0	129,0	131,0	155,0	155,0	155,0	16	4	400	115	10
d	103,0	108,0	116,0	130,0	130,0	136,0					
e	51,0	59,0	59,0	68,0	68,0	68,0	16	5	400	102	10
f	-	11,0	11,0	11,0	11,0	11,0					
h	4,1	5,1	5,1	5,5	5,5	5,5	32	3	230	1114	10
i	4,5	4,5	4,5	6,5	6,5	6,5					
k	40,0	-	-	80,0	80,0	80,0	32	4	400	1118	10
l	M20	M20	M20	M25	M25	M25					
m	for M20	for M20	for M20	2xM25	2xM25	2xM25	32	5	400	103	10

Surface Mounting Socket Outlet

- Screw terminals
- Protection degree IP67
- Cable entry 1x at top (open), 2x at bottom (closed)
- Base rotatable by 180°



1155



1 MB 13

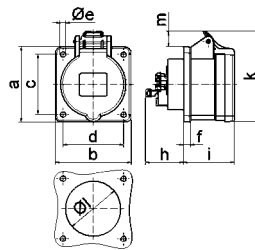
A	16	16	16	32	32	32	A	P	V	Art. No.	Qty
P	3	4	5	3	4	5					
a	64,0	75,0	75,0	83,0	83,0	83,0	16	3	230	1133	10
b	87,0	100,0	100,0	126,0	126,0	126,0					
c	115,0	130,0	130,0	160,0	160,0	160,0	16	4	400	1137	10
d	103,0	110,0	115,0	129,0	129,0	135,0					
e	51,0	59,0	59,0	68,0	68,0	68,0	16	5	400	1143	10
f	20,0	11,0	11,0	11,0	11,0	11,0					
g	20,0	-	-	-	-	-					
h	4,1	5,1	5,1	5,5	5,5	5,5	32	3	230	1145	10
i	4,5	4,5	4,5	6,5	6,5	6,5					
k	8,0	10,0	10,0	12,0	12,0	12,0	32	4	400	1149	10
l	-	-	-	65,0	65,0	65,0					
m	-	-	-	80,0	80,0	80,0	32	5	400	1155	10
n	-	-	-	10,0	10,0	10,0					
o	M20	M20	M20	M25	M25	M25					
p	for M20	for M20	for M20	2xM25	2xM25	2xM25					

QUICK-CONNECT Panel Mounting Socket Outlet

- Straight
- Screwless terminals
- Kontex contact
- Flange 75 x 75 mm
- Protection degree IP44



132001



4 MB 263

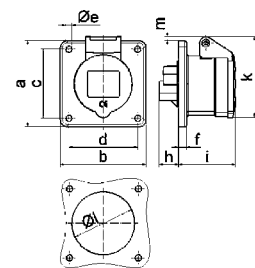
A	16	16	16	32	32	32	A	P	V	Art. No.	Qty
P	3	4	5	3	4	5					
a	75,0	75,0	75,0	75,0	75,0	75,0	16	3	230	13686	10
b	75,0	75,0	75,0	75,0	75,0	75,0					
c	60,0	60,0	60,0	60,0	60,0	60,0	16	4	400	13693	10
d	60,0	60,0	60,0	60,0	60,0	60,0					
e	5,5	5,5	5,5	5,5	5,5	5,5	16	5	400	132001	10
f	7,0	7,0	7,0	8,0	8,0	8,0					
h	35,5	35,5	35,5	50,0	50,0	50,0	32	3	230	13703	10
i	50,0	50,0	51,0	60,0	60,0	60,0					
k	74,0	84,0	91,0	94,0	94,0	102,0	32	4	400	13710	10
l	45,0	45,0	55,0	60,0	60,0	60,0					
m	8,0	12,0	16,0	17,0	17,0	22,0	32	5	400	132002	10

Panel Mounting Socket Outlet

- Straight
- Screw terminals
- Flange 75 x 75 mm
- Protection degree IP44



1333



4 MB 4

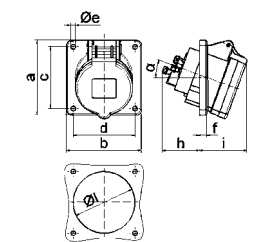
A	16	16	16	32	32	32	A	P	V	Art. No.	Qty
P	3	4	5	3	4	5					
a	75,0	75,0	75,0	75,0	75,0	75,0	16	3	230	13001	10
b	75,0	75,0	75,0	75,0	75,0	75,0					
c	60,0	60,0	60,0	60,0	60,0	60,0	16	4	400	1324	10
d	60,0	60,0	60,0	60,0	60,0	60,0					
e	5,5	5,5	5,5	5,5	5,5	5,5	16	5	400	13005	10
f	7,0	7,0	7,0	8,0	8,0	8,0					
h	17,0	26,0	17,0	36,0	36,0	19,0	32	3	230	13007	10
i	51,0	53,0	53,0	62,0	62,0	62,0					
k	70,0	80,0	85,0	90,0	90,0	98,0	32	4	400	13011	10
l	45,0	45,0	55,0	60,0	60,0	60,0					
m	3,5	7,0	11,5	12,0	12,0	17,0	32	5	400	1333	10

QUICK-CONNECT Panel Mounting Socket Outlet

- Angled 20°
- Screwless terminals
- Kontex contact
- Flange 85 x 85 mm
- Protection degree IP44



12757



4 MB 264

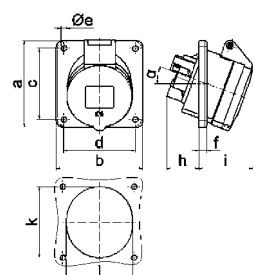
A	16	16	16	32	32	32	A	P	V	Art. No.	Qty
P	3	4	5	3	4	5					
a	85,0	85,0	85,0	85,0	85,0	85,0	16	3	230	12749	10
b	85,0	85,0	85,0	85,0	85,0	85,0					
c	70,0	70,0	70,0	70,0	70,0	70,0	16	4	400	12753	10
d	70,0	70,0	70,0	70,0	70,0	70,0					
e	5,5	5,5	5,5	5,5	5,5	5,5	16	5	400	12757	10
f	8,0	8,0	8,0	8,0	8,0	8,0					
h	46,0	46,0	46,0	61,0	61,0	61,0	32	3	230	12761	10
i	50,0	51,0	54,0	60,0	60,0	60,0					
l	57,0	65,0	70,0	78,0	78,0	78,0	32	4	400	12764	10
α	20°	20°	20°	20°	20°	20°					
							32	5	400	12768	10

Panel Mounting Socket Outlet

- Angled 20°
- Screw terminals
- Flange 85 x 85 mm
- Protection degree IP44



12078



4 MB 26

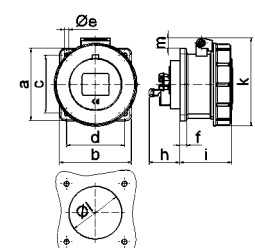
A	16	16	16	32	32	32	A	P	V	Art. No.	Qty
P	3	4	5	3	4	5					
a	85,0	85,0	85,0	85,0	85,0	85,0	16	3	230	12080	10
b	85,0	85,0	85,0	85,0	85,0	85,0					
c	70,0	70,0	70,0	70,0	70,0	70,0	16	4	400	12500	10
d	70,0	70,0	70,0	70,0	70,0	70,0					
e	5,5	5,5	5,5	5,5	5,5	5,5	16	5	400	12078	10
f	8,0	8,0	8,0	8,0	8,0	8,0					
h	30,0	30,0	30,0	50,0	50,0	50,0	32	3	230	12310	10
i	48,0	50,0	54,0	63,0	63,0	60,0					
k	57,0	65,0	70,0	78,0	78,0	78,0	32	4	400	12311	10
l	57,0	65,0	70,0	78,0	78,0	78,0					
α	20°	20°	20°	20°	20°	20°	32	5	400	1215	10

QUICK-CONNECT Panel Mounting Socket Outlet

- Straight
- Screwless terminals
- Kontex contact
- Flange 75 x 75 mm
- Protection degree IP67



13745



4 MB 105

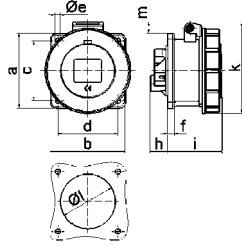
A	16	16	16	32	16	32	A	P	V	Art. No.	Qty
P	3	4	5	3	4	5					
a	75,0	75,0	75,0	75,0	75,0	75,0	16	3	230	13734	10
b	75,0	75,0	75,0	75,0	75,0	75,0					
c	60,0	60,0	60,0	60,0	60,0	60,0	16	4	400	13739	10
d	60,0	60,0	60,0	60,0	60,0	60,0					
e	5,5	5,5	5,5	5,5	5,5	5,5	16	5	400	13745	10
f	7,0	7,0	7,0	8,0	8,0	8,0					
h	35,5	35,5	35,5	50,0	50,0	50,0	32	3	230	13750	10
i	57,0	58,0	57,0	65,0	65,0	65,0					
k	76,0	83,0	93,0	100,0	100,0	106,0	32	4	400	13756	10
l	45,0	45,0	55,0	60,0	60,0	60,0					
m	3,5	7,0	11,5	12,0	12,0	17,0	32	5	400	13762	10

Panel Mounting Socket Outlet

- Straight
- Screw terminals
- Flange 75 x 75 mm
- Protection degree IP67



1370



4 MB 5

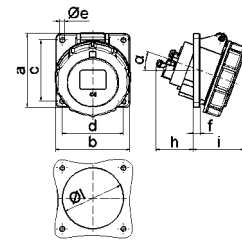
A	16	16	16	32	32	32	A	P	V	Art. No.	Qty
P	3	4	5	3	4	5					
a	75,0	75,0	75,0	75,0	75,0	75,0	16	3	230	1372	10
b	75,0	75,0	75,0	75,0	75,0	75,0					
c	60,0	60,0	60,0	60,0	60,0	60,0	16	4	400	1376	10
d	60,0	60,0	60,0	60,0	60,0	60,0					
e a	5,5	5,5	5,5	5,5	5,5	5,5	16	5	400	1382	10
f	7,0	7,0	7,0	8,0	8,0	8,0					
h	17,0	26,0	17,0	36,0	36,0	19,0	32	3	230	13024	10
i	57,0	58,0	57,0	65,0	65,0	65,0					
k	76,0	83,0	93,0	100,0	100,0	106,0	32	4	400	13028	10
l	45,0	45,0	55,0	60,0	60,0	60,0					
m	3,5	7,0	11,5	12,0	12,0	17,0	32	5	400	1370	10

QUICK-CONNECT Panel Mounting Socket Outlet

- Angled 20°
- Screwless terminals
- Kontex contact
- Flange 85 x 85 mm
- Protection degree IP67



12817



4 MB 114

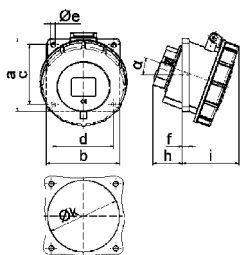
A	16	16	16	32	32	32	A	P	V	Art. No.	Qty
P	3	4	5	3	4	5					
a	85,0	85,0	85,0	85,0	85,0	85,0	16	3	230	12813	10
b	85,0	85,0	85,0	85,0	85,0	85,0					
c	70,0	70,0	70,0	70,0	70,0	70,0	16	4	400	12814	10
d	70,0	70,0	70,0	70,0	70,0	70,0					
e a	5,5	5,5	5,5	5,5	5,5	5,5	16	5	400	12817	10
f	8,0	8,0	8,0	8,0	8,0	8,0					
h	46,0	46,0	46,0	61,0	61,0	61,0	32	3	230	12819	10
i	57,0	57,0	60,0	65,0	65,0	69,0					
l	57,0	65,0	70,0	78,0	78,0	78,0	32	4	400	12821	10
α	20°	20°	20°	20°	20°	20°					
							32	5	400	12824	10

Panel Mounting Socket Outlet

- Angled 20°
- Screw terminals
- Flange 85 x 85 mm
- Protection degree IP67



12084



4 MB 22

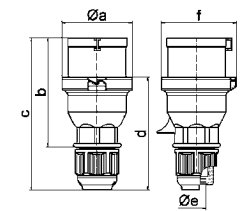
A	16	16	16	32	32	32	A	P	V	Art. No.	Qty
P	3	4	5	3	4	5					
a	85,0	85,0	85,0	85,0	85,0	85,0	16	3	230	12231	10
b	85,0	85,0	85,0	85,0	85,0	85,0					
c	70,0	70,0	70,0	70,0	70,0	70,0	16	4	400	12502	10
d	70,0	70,0	70,0	70,0	70,0	70,0					
e a	5,5	5,5	5,5	5,5	5,5	5,5	16	5	400	12084	10
f	8,0	8,0	8,0	8,0	8,0	8,0					
h	30,0	30,0	30,0	50,0	50,0	34,0	32	3	230	12327	10
i	55,0	57,0	59,0	67,0	67,0	69,0					
k	57,0	65,0	70,0	78,0	78,0	78,0	32	4	400	12329	10
l	57,0	65,0	70,0	78,0	78,0	78,0					
α	20°	20°	20°	20°	20°	20°	32	5	400	1264	10

QUICK-CONNECT Plug with MULTI-GRIP

- Screwless terminals
- Housing connection with thread and snap-in lock
- Cable gland Multi-Grip system
- Protection degree IP44



2136



2 MB 99

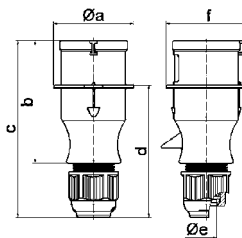
A	16	16	16	32	32	32	A	P	V	Art. No.	Qty
P	3	4	5	3	4	5					
a a	53,0	60,0	66,0	74,5	74,5	74,5	16	3	230	210740	10
b	93,5	100,5	103,0	121,0	121,0	121,5					
c	134,0	141,0	142,0	174,0	174,0	174,5	16	4	400	210757	10
d	97,5	104,5	105,5	128,0	128,0	128,5					
e a	18,0	18,0	18,0	23,0	23,0	23,0	16	5	400	210715	10
f	57,5	64,5	70,5	78,0	78,0	80,0					
							32	3	230	2138	10
							32	4	400	2142	10
							32	5	400	2148	10

TLS Plug with MULTI-GRIP

- Screw terminals
- Cable gland Multi-Grip system
- One-piece housing
- Protection degree IP44



204-TLS



2 MB 129

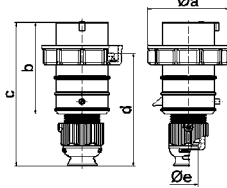
A	16	16	16	32	32	32	A	P	V	Art. No.	Qty
P	3	4	5	3	4	5					
a a	54,0	60,0	66,0	71,0	71,0	80,0	16	3	230	21001-TLS	10
b	94,5	98,0	101,0	115,0	115,0	119,0					
c	138,0	142,0	145,0	170,0	170,0	174,0	16	4	400	21005-TLS	10
d	101,5	105,5	108,5	124,0	124,0	128,0					
e a	18,0	18,0	18,0	23,0	23,0	23,0	16	5	400	203-TLS	10
f	56,6	64,0	71,0	76,0	76,0	85,0					
							32	3	230	21013-TLS	10
							32	4	400	21017-TLS	10
							32	5	400	204-TLS	10

QUICK-CONNECT TE-Plus Plug with MULTI-GRIP

- Screwless terminals
- High temperature resistant contact carrier
- Nickel plated contacts
- Cable gland Multi-Grip system
- Protection degree IP67

QUICK CONNECT
MULTI GRIP

21241



2 MB 94

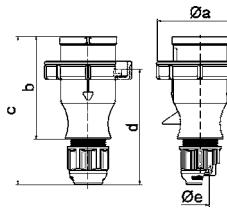
A	16	16	16	32	32	32	A	P	V	Art. No.	Qty
P	3	4	5	3	4	5					
a	70,0	78,0	86,0	94,0	94,0	101,0	16	3	230	21238	10
b	95,0	95,0	97,0	118,0	118,0	117,0					
c	145,0	145,0	152,0	178,0	178,0	181,0	16	4	400	21349	10
d	111,0	111,0	119,0	136,0	136,0	138,5					
e	18,0	18,0	21,0	23,0	23,0	27,0	16	5	400	21239	10
							32	3	230	21240	10
							32	4	400	21351	10
							32	5	400	21241	10

TLS Plug with MULTI-GRIP

- Screw terminals
- Nickel plated contacts
- Cable gland Multi-Grip system
- One-piece housing
- Protection degree IP67

MULTI GRIP

210589



2 MB 130

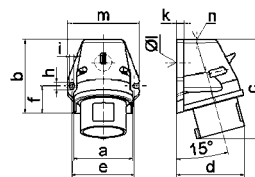
A	16	16	16	32	32	32	A	P	V	Art. No.	Qty
P	3	4	5	3	4	5					
a	70,0	78,0	86,0	94,0	94,0	101,0	16	3	230	210576	10
b	94,5	98,0	101,0	115,0	115,0	119,0					
c	138,0	142,0	145,0	170,0	170,0	174,0	16	4	400	210583	10
d	105,5	109,5	112,5	128,0	128,0	132,0					
e	18,0	18,0	18,0	23,0	23,0	23,0	16	5	400	210589	10
							32	3	230	210594	10
							32	4	400	210601	10
							32	5	400	210607	10

QUICK-CONNECT Surface Mounting

- Appliance Inlet
- Screwless terminals
- Protection degree IP44
- Cable entry 1x at top (open), 1x at bottom (closed)

QUICK CONNECT

242001



5 MB 44

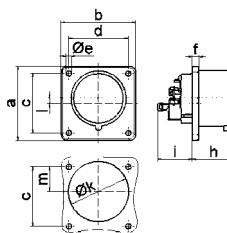
A	16	16	16	32	32	32	A	P	V	Art. No.	Qty
P	3	4	5	3	4	5					
a	59,5	72,4	72,4	79,1	79,1	79,1	16	3	230	24423	10
b	90,0	90,0	90,0	92,0	92,0	92,0					
c	120,0	120,0	122,0	134,0	134,0	134,0	16	4	400	24392	10
d	72,0	84,0	84,0	89,0	89,0	89,0					
e	62,0	77,0	77,0	84,0	84,0	84,0	16	5	400	242001	10
f	33,5	33,5	33,5	30,0	30,0	30,0					
h	9,0	9,0	9,0	9,0	9,0	9,0	32	3	230	24402	10
i	5,5	5,5	5,5	5,5	5,5	5,5					
k	8,0	9,0	9,0	9,0	9,0	9,0	32	4	400	24405	10
l	21,0	21,0	21,0	21,0	21,0	21,0					
m	72,0	87,0	87,0	94,0	94,0	94,0	32	5	400	242002	10
n	M20	M25	M25	M25	M25	M25					

QUICK-CONNECT Appliance Inlet with Flange

- Screwless terminals
- Flange 75 x 75 mm
- Protection degree IP44

QUICK CONNECT

282002



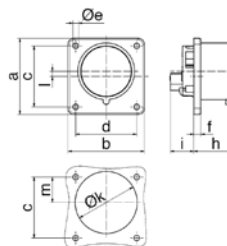
5 MB 85

A	16	16	16	32	32	32	A	P	V	Art. No.	Qty
P	3	4	5	3	4	5					
a	75,0	75,0	75,0	75,0	75,0	75,0	16	3	230	28111	10
b	75,0	75,0	75,0	75,0	75,0	75,0					
c	60,0	60,0	60,0	60,0	60,0	60,0	16	4	400	28112	10
d	60,0	60,0	60,0	60,0	60,0	60,0					
e	5,5	5,5	5,5	5,5	5,5	5,5	16	5	400	282001	10
f	7,0	7,0	7,0	7,0	7,0	7,0					
h	43,0	43,0	43,0	53,0	53,0	53,0	32	3	230	28010	10
i	39,0	39,0	39,0	50,0	50,0	50,0					
k	42,0	48,0	61,0	57,0	57,0	60,0	32	4	400	28012	10
l	-	-	5,0	2,0	2,0	-					
m	30,0	30,0	25,0	28,0	28,0	30,0	32	5	400	282002	10

Appliance Inlet with Flange

- Screw terminals
- Flange 75 x 75 mm
- Nickel plated contacts
- Protection degree IP44

2815



5 MB 39

A	16	16	16	32	32	32	A	P	V	Art. No.	Qty
P	3	4	5	3	4	5					
a	75,0	75,0	75,0	75,0	75,0	75,0	16	3	230	2817	10
b	75,0	75,0	75,0	75,0	75,0	75,0					
c	60,0	60,0	60,0	60,0	60,0	60,0	16	4	400	2831	10
d	60,0	60,0	60,0	60,0	60,0	60,0					
e	5,5	5,5	5,5	5,5	5,5	5,5	16	5	400	2814	10
f	7,0	7,0	7,0	7,0	7,0	7,0					
h	43,0	43,0	43,0	53,0	53,0	53,0	32	3	230	2827	10
i	24,0	24,0	24,0	30,0	30,0	30,0					
k	42,0	48,0	61,0	57,0	57,0	57,0	32	4	400	2830	10
l	-	-	5,0	2,0	2,0	-					
m	30,0	30,0	25,0	28,0	28,0	30,0	32	5	400	2815	10

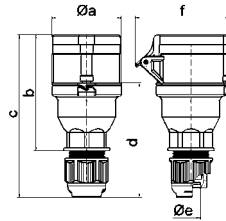
QUICK-CONNECT Connector with MULTI-GRIP

- Screwless terminals
- Housing connection with thread and snap-in lock
- Cable gland Multi-Grip system
- Kontex contact
- Protection degree IP44

QUICK CONNECT
MULTI GRIP



3148



3 MB 65

A	16	16	16	32	32	32	A	P	V	Art. No.	Qty
P	3	4	5	3	4	5					
a	53,0	60,0	66,0	74,5	74,5	74,5	16	3	230	3126	10
b	100,5	112,5	113,5	133,5	133,5	134,5					
c	141,0	153,0	154,0	186,0	186,0	187,0	16	4	400	3130	10
d	97,5	104,5	105,5	127,5	127,5	128,5					
e	18,0	18,0	18,0	23,0	23,0	23,0	16	5	400	3136	10
f	76,0	79,0	86,0	92,0	92,0	97,0					
							32	3	230	3138	10
							32	4	400	3142	10
							32	5	400	3148	10

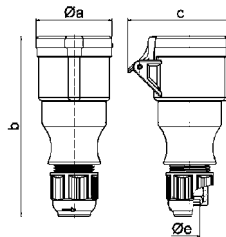
TLS Connector with MULTI-GRIP

- Screw terminals
- Cable gland Multi-Grip system
- One-piece housing
- Protection degree IP44

MULTI GRIP



304- TLS



3 MB 82

A	16	16	16	32	32	32	A	P	V	Art. No.	Qty
P	3	4	5	3	4	5					
a	51,0	58,0	65,0	67,0	67,0	73,0	16	3	230	31001-TLS	10
b	145,0	148,0	156,0	185,0	185,0	185,0					
c	74,0	84,0	90,0	94,0	94,0	102,0	16	4	400	31005-TLS	10
e	18,0	18,0	18,0	23,0	23,0	23,0					
							16	5	400	303-TLS	10
							32	3	230	31013-TLS	10
							32	4	400	31017-TLS	10
							32	5	400	304-TLS	10

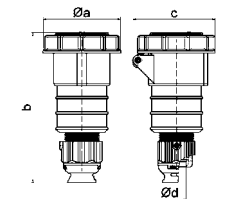
QUICK-CONNECT TE-Plus Connector with MULTI-GRIP

- Screwless terminals
- High temperature resistant contact carrier
- Nickel plated contacts
- Cable gland Multi-Grip system
- Kontex contact
- Protection degree IP67

QUICK CONNECT
MULTI GRIP



31243



3 MB 63

A	16	16	16	32	32	32	A	P	V	Art. No.	Qty
P	3	4	5	3	4	5					
a	70,5	78,0	86,5	94,0	94,0	101,5	16	3	230	31240	10
b	161,0	161,0	168,0	196,0	196,0	200,0					
c	77,0	83,0	93,0	99,0	99,0	107,0	16	4	400	31241	10
d	18,0	18,0	21,0	23,0	23,0	27,0					
							16	5	400	31243	10
							32	3	230	31244	10
							32	4	400	31245	10
							32	5	400	31247	10

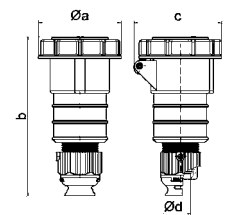
TLS Connector with MULTI-GRIP

- Screw terminals
- Nickel plated contacts
- Cable gland Multi-Grip system
- One-piece housing
- Protection degree IP67

MULTI GRIP



310346



3 MB 81

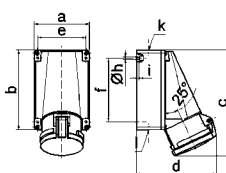
A	16	16	16	32	32	32	A	P	V	Art. No.	Qty
P	3	4	5	3	4	5					
a	70,5	78,0	86,5	94,0	94,0	101,5	16	3	230	310333	10
b	154,0	155,0	160,0	190,0	190,0	190,0					
c	77,0	83,0	93,0	99,0	107,0	107,0	16	4	400	310340	10
e	18,0	18,0	18,0	23,0	23,0	23,0					
							16	5	400	310346	10
							32	3	230	310351	10
							32	4	400	310358	10
							32	5	400	310364	10

Surface Mounting Socket Outlet

- Screw or screwless terminals
- Nickel plated contacts
- Kontex Plus with box terminals
- Without pilot-contact, with pilot-contact add „P“ to the art. no.
- Protection degree IP44



110383



1 MB 4

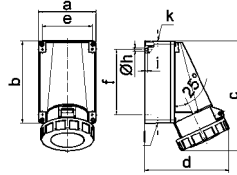
A	63	63	Execution	A	P	V	Art. No.	Qty
QC	Screw							
a	118,0	118,0	QUICK CONNECT	63	4	400	110415	5
b	170,0	170,0						
c	223,0	223,0	QUICK CONNECT	63	5	400	110383	5
d	168,0	168,0						
e	104,0	104,0	Screw	63	3	230	1104	5
f	136,0	136,0						
h	6,1	6,1	Screw	63	4	400	1127	5
i	6,0	6,0						
k	M40	M40	Screw	63	5	400	1124	5
l	M32/32	M32/32						

Surface Mounting Socket Outlet

- Screw or screwless terminals
- Nickel plated contacts
- Without pilot-contact, with pilot-contact add „P“ to the art.no.
- Protection degree IP67



110413



1 MB 3/20

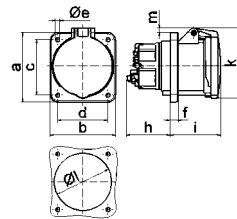
A	63	125	Execution	A	P	V	Art. No.	Qty
a	118,0	160,0	QUICK CONNECT	63	4	400	110416	5
b	170,0	260,0	QUICK CONNECT	63	5	400	110413	5
c	228,0	330,0	Screw	63	3	230	1157	5
d	176,0	168,0	Screw	63	4	400	1161	5
e	104,0	140,0	Screw	63	5	400	1112	5
f	136,0	240,0	Screw	63	3	230	11437	5
g h	6,1	8,3	Screw	125	3	230	11441	5
i	6,0	10,0	Screw	125	4	400	11441	5
k	M40	M50	Screw	125	5	400	11447	5
l	M32/32	-						

Panel Mounting Socket Outlet

- Straight
- Screw or screwless terminals
- High temperature resistant contact carrier
- Flange 107 x 100 mm
- Without pilot-contact, with pilot-contact add „P“ to the art. no.
- Protection degree IP44



130114



4 MB 265/8

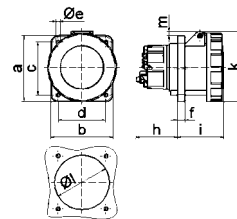
A	63	63	Execution	A	P	V	Art. No.	Qty
	QC	Screw						
a	107,0	107,0	QUICK CONNECT	63	4	400	130130	5
b	100,0	100,0	QUICK CONNECT	63	5	400	130114	5
c	85,0	85,0	Screw	63	3	230	1307	5
d	77,0	77,0	Screw	63	4	400	134	5
e	6,5	6,5	Screw	63	5	400	136	5
f	12,0	12,0						
g	6,5	6,5						
h	67,0	56,5						
i	77,0	77,0						
k	110,0	110,0						
l	88,0	88,0						
m	7,0	7,0						

Panel Mounting Socket Outlet

- Straight
- Screw or screwless terminals
- High temperature resistant contact carrier
- Flange 107 x 100 mm (at 63A)
- Flange 120 x 120 mm (at 125A)
- Without pilot-contact, with pilot-contact add „P“ to the art. no.
- Protection degree IP67



130119



4 MB 267/55

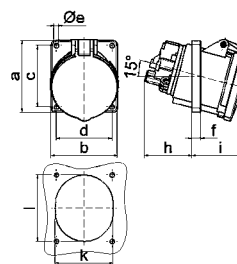
A	63	63	125	Execution	A	P	V	Art. No.	Qty
	QC	Screw							
a	107,0	107,0	120,0	QUICK CONNECT	63	4	400	130131	5
b	100,0	100,0	120,0	QUICK CONNECT	63	5	400	130119	5
c	85,0	85,0	100,0	Screw	63	3	230	1396	5
d	77,0	77,0	100,0	Screw	63	4	400	13100	5
e	6,5	6,5	6,5	Screw	63	5	400	13104	5
f	12,0	12,0	21,0	Screw	63	3	230	13452	5
g	6,5	6,5	50,0	Screw	125	3	230	13452	5
h	67,0	56,5	50,0	Screw	125	4	400	13447	5
i	76,0	76,0	117,0	Screw	125	5	400	13451	5
k	113,0	113,0	129,0						
l	88,0	88,0	104,0						
m	7,0	7,0	6,0						

Panel Mounting Socket Outlet

- Angled
- Screw or screwless terminals
- High temperature resistant contact carrier
- Flange 100 x 92 mm
- Without pilot-contact, with pilot-contact add „P“ to the art. no.
- Protection degree IP44



120273



4 MB 64

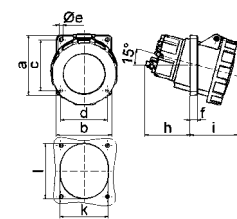
A	63	63	63	Execution	A	P	V	Art. No.	Qty
	3	4	5						
a	100,0	100,0	100,0	QUICK CONNECT	63	5	400	120273	5
b	92,0	92,0	92,0	Screw	63	3	230	12563	10
c	85,0	85,0	85,0	Screw	63	4	400	12074	10
d	77,0	77,0	77,0	Screw	63	5	400	12567	10
e	6,5	6,5	6,5						
f	12,0	12,0	12,0						
g	6,5	6,5	6,5						
h	65,0	65,0	65,0						
i	81,0	81,0	81,0						
k	80,0	80,0	80,0						
l	92,0	92,0	92,0						

Panel Mounting Socket Outlet

- Angled
- Screw or screwless terminals
- High temperature resistant contact carrier
- Flange 100 x 92 mm (at 63A)
- Flange 114 x 114 mm (at 125A)
- Without pilot-contact, with pilot-contact add „P“ to the art. no.
- Protection degree IP67



120274

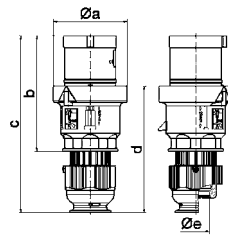


4 MB 268/65/9

A	63	63	125	Execution	A	P	V	Art. No.	Qty
	QC	Screw							
a	100,0	100,0	114,0	QUICK CONNECT	63	4	400	120320	5
b	92,0	92,0	114,0	QUICK CONNECT	63	5	400	120274	5
c	85,0	85,0	90,0	Screw	63	3	230	12569	5
d	77,0	77,0	90,0	Screw	63	4	400	12570	5
e	6,5	6,5	6,5	Screw	63	5	400	12574	5
f	12,0	12,0	12,0	Screw	125	3	230	12100	5
g	6,5	6,5	82,0	Screw	125	4	400	12104	5
h	74,0	65,0	82,0	Screw	125	5	400	12108	5
i	80,0	80,0	90,0						
k	80,0	80,0	92,0						
l	92,0	92,0	105,0						

TE Plug with MULTI-GRIP

- Screw or screwless terminals
- Nickel plated contacts
- Cable gland Multi-Grip system
- Housing connection with thread and snap-in lock
- Protection degree IP44



210765

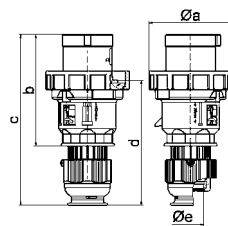
2 MB 158

MULTI GRIP

A	63	Execution	A	P	V	Art. No.	Qty
P							
ø a	96,0	QUICK CONNECT	63	4	400	210761	5
b	153,0						
c	233,0	QUICK CONNECT	63	5	400	210765	5
d	167,0						
ø e	36,0	Screw	63	3	230	2104	5
		Screw	63	4	400	2151	5
		Screw	63	5	400	2155	5

TE Plug with MULTI-GRIP

- Screw or screwless terminals
- High temperature resistant contact carrier
- Nickel plated contacts
- Cable gland Multi-Grip system
- Housing connection with thread and snap-in lock
- Protection degree IP67



210766

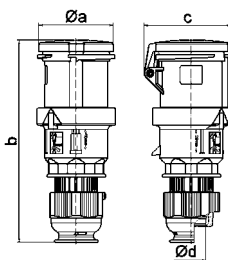
2 MB 159/214

MULTI GRIP

A	63	125	Execution	A	P	V	Art. No.	Qty
P								
ø a	113,5	126,0	QUICK CONNECT	63	4	400	210762	5
b	153,0	181,0	QUICK CONNECT	63	5	400	210766	5
c	233,0	282,0						
d	171,0	206,0	Screw	63	3	230	2181	5
ø e	36,0	50,0	Screw	63	4	400	2185	5
			Screw	63	5	400	2189	5
			Screw	125	3	230	2191	5
			Screw	125	4	400	2195	5
			Screw	125	5	400	2199	5

Connector with MULTI-GRIP

- Screw or screwless terminals
- Nickel plated contacts
- Cable gland Multi-Grip system
- Housing connection with thread and snap-in lock
- Without pilot-contact, with pilot-contact add „P“ to the art. no.
- Protection degree IP44



310494

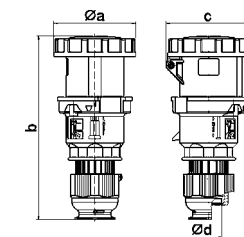
3 MB 107

MULTI GRIP

A	63	Execution	A	P	V	Art. No.	Qty
P							
ø a	95,0	QUICK CONNECT	63	4	400	310490	5
b	251,0						
c	109,0	QUICK CONNECT	63	5	400	310494	5
d	36,0						
		Screw	63	3	230	3104	5
		Screw	63	4	400	3151	5
		Screw	63	5	400	3112	5

TE Connector with MULTI-GRIP

- Screw or screwless terminals
- High temperature resistant contact carrier
- Nickel plated contacts
- Cable gland Multi-Grip system
- Housing connection with thread and snap-in lock
- Without pilot-contact, with pilot-contact add „P“ to the art. no.
- Protection degree IP67



310495

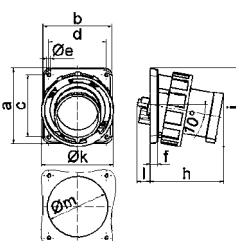
3 MB 109/131

MULTI GRIP

A	63	125	Execution	A	P	V	Art. No.	Qty
P								
ø a	110,0	125,0	QUICK CONNECT	63	4	400	310491	5
b	251,0	300,0	QUICK CONNECT	63	5	400	310495	5
c	113,0	128,0						
d	36,0	50,0	Screw	63	3	230	3181	5
			Screw	63	4	400	3185	5
			Screw	63	5	400	3124	5
			Screw	125	3	230	3191	5
			Screw	125	4	400	3195	5
			Screw	125	5	400	3199	5

Panel Mounting Appliance Inlet

- Screw terminals
- High temperature resistant contact carrier
- Nickel plated contacts
- Box terminals
- Flange 107 x 100 mm (63A)
- Flange 130 x 120 mm (125A)
- Protection degree IP67



2744

5 MB 56/ 22

A	63	125	A	P	V	Art. No.	Qty
P	3/4/5	3/4/5					
a	107,0	130,0	63	3	230	27007	5
b	100,0	120,0					
c	85,0	108,0	63	4	400	27011	5
d	77,0	100,0					
e ø	6,5	6,5	63	5	400	27017	5
f	12,0	13,0					
h	155,0	130,0	125	3	230	2736	5
i	118,0	135,0					
k	113,5	126,0	125	4	400	2740	5
l	-	23,0					
m ø	-	105,0	125	5	400	2744	5

Surface Mounting Socket Outlet

- Switched/ interlocked
- Nickel plated contacts
- With mech. double interlocking
- In 0-position lockable (with padlock)
- Protection degree IP44

Ampere	Pole	Voltage	Art. No.	Quantity
16	3	230	1619	1
16	4	400	16038	1
16	5	400	16039	1
32	4	400	16042	1
32	5	400	16043	1
63	4	400	16605	1
63	5	400	16603	1



16603

Surface Mounting Socket Outlet

- Switched/ interlocked
- Nickel plated contacts
- With mech. double interlocking
- In 0-position lockable (with padlock)
- Protection degree IP67

Ampere	Pole	Voltage	Art. No.	Quantity
16	3	230	160048	1
16	4	400	16040	1
16	5	400	16041	1
32	4	400	160178	1
32	5	400	160177	1
63	4	400	16604	1
63	5	400	16602	1



16602

Surface Mounting Socket Outlet

- Switched/ interlocked/ fused
- In 0-position lockable (with padlock)
- Nickel plated contacts
- With C-type MCB and RCCB 40/0.03A for 16A and 32A
- With D02 and RCCB 63/0.03A for 63A
- Protection degree IP44

Ampere	Pole	Voltage	Art. No.	Quantity
16	4	400	17323	1
16	5	400	17343	1
32	4	400	17325	1
32	5	400	17344	1
63	4	400	17536	1
63	5	400	17537	1



17537

Surface Mounting Socket Outlet

- Switched/ interlocked/ fused
- In 0-position lockable (with padlock)
- Nickel plated contacts
- With C-type MCB and RCCB 40/0.03A for 16A and 32A
- With D02 and RCCB 63/0.03A for 63A
- Protection degree IP67

Ampere	Pole	Voltage	Art. No.	Quantity
16	4	400	17329	1
16	5	400	17345	1
32	4	400	17331	1
32	5	400	17346	1
63	4	400	17553	1
63	5	400	17554	1



17554

Surface Mounting Socket Outlet

- Screw terminals
- Nickel plated contacts
- Cable entry one at top (open) and two at bottom (closed)
- Base rotatable by 180°
- Protection degree IP44

Ampere	Pole	Voltage	Art. No.	Quantity
16	2	24	410	
16	3	24	416	
16	2	42	411	
16	3	42	417	
32	2	24	4111	
32	3	24	4117	
32	2	42	4112	
32	3	42	4118	



410

Panel Mounting Socket Outlet

- Straight
- Screw terminals
- Nickel plated contacts
- Flange 75 x 75 mm
- Protection degree IP44

Ampere	Pole	Voltage	Art. No.	Quantity
16	2	24	4354	
16	3	24	4360	
16	2	42	4355	
16	3	42	4361	
32	2	24	4365	
32	3	24	4371	
32	2	42	4366	
32	3	42	4372	



4372

Plug

- Screw terminals
- Nickel plated contacts
- Cable gland Multi-Grip system
- Protection degree IP44



Ampere	Pole	Voltage	Art. No.	Quantity
16	2	24	4422	
16	3	24	4428	
16	2	42	4423	
16	3	42	4429	
32	2	24	4433	
32	3	24	4439	
32	2	42	4434	
32	3	42	4440	



4422

Connector

- Screw terminals
- Nickel plated contacts
- Cable gland Multi-Grip system
- Protection degree IP44



Ampere	Pole	Voltage	Art. No.	Quantity
16	2	24	4522	
16	3	24	4528	
16	2	42	4523	
16	3	42	4529	
32	2	24	4533	
32	3	24	4539	
32	2	42	4534	
32	3	42	4540	



4529

QUICK-CONNECT Phase Inverter with MULTI-GRIP

- Screwless terminals
- Nickel plated contacts
- Cable gland Multi-Grip system
- Housing connection with thread and snap-in lock
- Protection degree IP44



Ampere	Pole	Voltage	Art. No.	Quantity
16	4	400	22053	10
16	5	400	225	10
32	4	400	22055	10
32	5	400	227	10



227

Phase Inverter with MULTI-GRIP

- Screw terminals
- High temperature resistant contact carrier
- Nickel plated contacts
- Cable gland Multi-Grip system
- Protection degree IP44



Ampere	Pole	Voltage	Art. No.	Quantity
16	5	230	2286	10
16	5	400	2271	10
32	5	230	2287	10
32	5	400	2288	10



2288

Phase Inverter with MULTI-GRIP

- Screw terminals
- High temperature resistant contact carrier
- Nickel plated contacts
- Cable gland Multi-Grip system
- Protection degree IP67



Ampere	Pole	Voltage	Art. No.	Quantity
16	5	230	2266	10
16	5	400	2251	10
32	5	230	2267	10
32	5	400	2252	10



2251

Phase Inverter - Surface Mounting Appliance Inlet

- Screw terminals
- High temperature resistant contact carrier
- Nickel plated contacts
- Protection degree IP44

Ampere	Pole	Voltage	Art. No.	Quantity
16	5	230	24208	10
16	5	400	24209	10
32	5	230	24210	10
32	5	400	24211	10



24209

Surface Mounting Socket Outlet 7-pole

- Screw terminals
- High temperature resistant contact carrier
- Nickel plated contacts
- Cable entry 1 x at top (opened), 2 x at bottom (closed)
- Base rotatable by 180°
- Protection degree IP44

Ampere	Pole	Voltage	Art. No.	Quantity
16	7	230	11480	10
16	7	400	11481	10
32	7	230	11482	10
32	7	400	11483	10



11483

Panel Mounting Socket Outlet 7-pole

- Straight
- Screw terminals
- High temperature resistant contact carrier
- Nickel plated contacts
- Flange 75 x 75 mm
- Drill holes 60 x 60 mm
- Protection degree IP44

Ampere	Pole	Voltage	Art. No.	Quantity
16	7	230	13326	10
16	7	400	13327	10
32	7	230	13328	10
32	7	400	13329	10



13329

Plug 7-pole with MULTI-GRIP

- Screw terminals
- High temperature resistant contact carrier
- Nickel plated contacts
- Cable gland Multi-Grip system
- Protection degree IP44



Ampere	Pole	Voltage	Art. No.	Quantity
16	7	230	210550	10
16	7	400	21557	10
32	7	230	210636	10
32	7	400	210067	10



210067

Connector 7-pole with MULTI-GRIP

- Screw terminals
- High temperature resistant contact carrier
- Nickel plated contacts
- Cable gland Multi-Grip system
- Protection degree IP44



Ampere	Pole	Voltage	Art. No.	Quantity
16	7	230	310311	10
16	7	400	31752	10
32	7	230	310381	10
32	7	400	310123	10



310123

Domestic Panel Mounting**Socket Outlet**

- Screw terminals
- Hinged lid and injected flange gasket (E,F)
- Nickel plated contacts (E, F, K)
- Protection degree IP54

Earthing Type Country - System	Colour	Art. No.	Qty
Germany F	blue	71094	10
Germany F	grey	71095	10
Belgium/France E	blue	7139	10
Belgium/France E	grey	7142	10
Denmark K	blue	71071	
UK G	blue	71142	

**Domestic Panel Mounting****Socket Outlet**

- Screwless terminals
- Hinged lid and injected flange gasket
- Nickel plated contacts
- Protection degree IP54

QUICK CONNECT

Earthing Type Country - System	Colour	Art. No.	Qty
Germany F	blue	71099	10
Germany F	grey	71100	10
Belgium/France E	blue	71118	10
Belgium/France E	grey	71119	10

**Domestic Panel Mounting****Socket Outlet**

- Screw terminals
- Protection degree IP68
- Nickel plated contacts

Earthing Type Country - System	Colour	Art. No.	Qty
Germany F	blue	7112	10
Germany F	grey	7119	10
Belgium/France E	blue	7153	10
Belgium/France E	grey	71028	10



7112

Domestic Interlocked Mounting**Socket Outlet**

- Switched and electrical interlocked
- Protection degree IP67
- Nickel plated contacts

Earthing Type Country - System	Colour	Art. No.	Qty
Germany F	blue	76100	1

**Domestic Plug**

- Cable gland Multi-Grip system
- Spacious connection area
- Double earthing system (E/F)
- Protection degree IP44
- Nickel plated contacts
- **MULTI GRIP**

Earthing Type Country - System	Colour	Art. No.	Qty
Germany F	blue	7370	20
Belgium/France E	blue		
Germany F	grey	7371	20
Belgium/France E	grey		
Germany F	black	7372	20
Belgium/France E	black		
Germany F	red	7373	20
Belgium/France E	red		



7370

Domestic Plug

- Closure cap
- Nickel plated contacts
- With cable gland
- Double earthing system (E/F)
- Protection degree IP68

Earthing Type Country - System	Colour	Art. No.	Qty
Germany F	blue	736	10
Belgium/France E	blue		
Germany F	grey	737	10
Belgium/France E	grey		



736

Domestic Connector

- Cable gland Multi-Grip system
- Spacious connection area
- Optional with shutter
- Protection degree IP54
- Nickel plated contacts
- **MULTI GRIP**

Earthing Type Country - System	Colour	Art. No.	Qty
Germany F	blue	7486	20
Germany F	grey	7487	20
Germany F	black	7488	20
Germany F	red	7489	20
Belgium/France E	blue	7490	20
Belgium/France E	grey	7491	20
Belgium/France E	black	7492	20
Belgium/France E	red	7493	20



7486

Domestic Connector

- Nickel plated contacts
- With cable gland
- Protection degree IP68

Earthing Type Country - System	Colour	Art. No.	Qty
Germany F	blue	746	10
Germany F	grey	747	10
Belgium/France E	blue	7416	10
Belgium/France E	grey	7455	10



746

Technical Informations

- Container operating voltage 400 - 440V, clock face position 3h
- IEC 60309, EN 60309, VDE 0623, DNV-GL

TE Panel Mounting Socket Outlet

- Straight
- High temperature resistant contact carrier
- Nickel plated contacts
- Protection degree IP67



Execution	A	P	V	h	Art. No.
Screw terminal	32	4	400	3	13021
QUICK CONNECT	32	4	400	3	130156

QUICK-CONNECT Surface Mounting Socket Outlet

- Screwless terminals
- High temperature resistant contact carrier
- Nickel plated contacts
- Protection degree IP67



A	P	V	h	Art. No.
32	4	400	3	11556

TE Surface Mounting Socket Outlet

- Switched
- With mech. double interlocking
- High temperature resistant contact carrier
- Nickel plated contacts
- Protection degree IP67



A	P	V	h	Art. No.
32	4	400	3	16050

TE Surface Mounting Socket Outlet

- Switched
- With mech. double interlocking
- High temperature resistant contact carrier
- Nickel plated contacts
- Protection degree IP67



A	P	V	h	Art. No.
32	4	400	3	17026

Plug with MULTI-GRIP

- Nickel plated contacts
- Cable gland Multi-Grip system
- One-piece housing
- Protection degree IP67



MULTI GRIP

Execution	A	P	V	h	Art. No.
Screw terminal	32	4	400	3	210824
QUICK CONNECT	32	4	400	3	21232-TLQ

21232-TLQ

Connector with MULTI-GRIP

- Nickel plated contacts
- Cable gland Multi-Grip system
- One-piece housing
- Protection degree IP67



MULTI GRIP

Execution	A	P	V	h	Art. No.
Screw terminal	32	4	400	3	310567
QUICK CONNECT	32	4	400	3	31186-TLQ

310567

Order no. **896459**

Components:

1 CEE socket 32A, 400V, 4p, 3h, IP67
nickel plated contacts, with mechanical interlocking, lockable in 0-position

Fuse:

1 C-type MCB 32A, 3p
1 RCCB 40/0.03A, 4p

Cable entry at top and bottom:

each with 1x M12, 1x M20, 2x M40

Connection option:

2 cables up to 5 x 25 mm²

VARIABOX-M

IP67 - 260 x 230 mm



Order no. **896462**

Components:

2 CEE socket 32A, 400V, 4p, 3h, IP67
nickel plated contacts, with mechanical interlocking, lockable in 0-position

Fuse:

2 C-type MCB 32A, 3p
1 RCCB 63/0.03A, 4p

Cable entry at top and bottom:

each with 1x M12, 1x M20, 2x M40

Connection option:

2 cables up to 5 x 25 mm²

VARIABOX-L

IP67 - 390 x 230 mm



Technical Informations

- Housing material: high quality plastic
- Wired ready for connection

TK-Kombi-Socket

- With terminals and wiring (ready for installation)
- With integrated domestic socket outlet 16A 230V ~ (type F - Germany)
- Protection degree IP44

A	P	V	Execution	Art.-No.
16	5	400		1010
16	5	400	with fuse holder 5 x 20 mm - DIN 41671	109
32	5	400	with fuse holder 5 x 20 mm - DIN 41671	1011
16	5	400	with twin terminal and QUICK CONNECT	1010-QC



1010

Order no. **89004**
Components:

- 2 domestic sockets 16A, 230V ~ (type F - Germany)
- 1 CEE socket 16A, 400V, 5p

Cable entry at top and bottom:

- each with 1x M12, 1x M20, 2x M25

Connection option:

- 1 cable up to 5 x 6 mm²

VARIABOX-S

IP44 - 130 x 230 mm


Order no. **89010**
Components:

- 2 domestic sockets 16A, 230V ~ (type F - Germany)
- 1 CEE socket 16A, 400V, 5p

Fuse:

- 2 C-type MCBs 16A, 1p
- 1 C-type MCB 16A, 3p
- 1 RCCB 40/0.03A, 4p

Cable entry at top and bottom:

- each with 1x M12, 1x M20, 2x M40

Connection option:

- 2 cables up to 5 x 25 mm²

VARIABOX-M

IP44 - 260 x 230 mm


Order no. **89076**
Components:

- 2 domestic sockets 16A, 230V ~ (type F - Germany)
- 1 CEE socket 16A, 400V, 5p
- 1 CEE socket 32A, 400V, 5p

Fuse:

- 2 C-type MCBs 16A, 1p
- 1 C-type MCB 16A, 3p
- 1 C-type MCB 32A, 3p
- 1 RCCB 40/0.03A, 4p

Cable entry at top and bottom:

- each with 1x M12, 1x M20, 2x M40

Connection option:

- 2 cables up to 5 x 25 mm²

VARIABOX-L

IP44 - 390 x 230 mm


Order no. **896342**
Components:

- 2 domestic sockets 16A, 230V ~ (type F - Germany)
- 1 CEE socket 16A, 400V, 5p
- 1 CEE socket 32A, 400V, 5p
- 2 RJ45 CAT6a below operating window, can be closed with the plugs plugged in

Fuse:

- 2 C-type MCBs 16A, 1p
- 1 C-type MCB 16A, 3p
- 1 C-type MCB 32A, 3p
- 1 RCCB 63/0.03A, 4p

Cable entry at top and bottom:

- je 2 x M20, 2 x M40

Connection option:

- 2 cables up to 5 x 25 mm²

VARIABOX-XL

IP44 - 520 x 230 mm


Order no. **89987**
Components:

- 10 domestic sockets 16A, 230V ~ (type F - Germany)
- 1 CEE socket 16A, 400V, 5p
- 1 CEE socket 32A, 400V, 5p

Fuse:

- 10 C-type MCBs 16A, 1p
- 1 C-type MCB 16A, 3p
- 1 C-type MCB 32A, 3p
- 1 RCCB 63/0.03A, 4p

Cable entry at top and bottom:

- each with 1x M12, 1x M20, 2x M40

Connection option:

- 2 cables up to 5 x 25 mm²

VARIABOX-L DUO

IP44 - 390 x 460 mm


Order no. **890929**
Components:

- 2 domestic sockets 16A, 230V ~ IP67 - (type F - Germany)
- 1 CEE socket 16A, 400V, 5p, IP67
- 1 CEE socket 32A, 400V, 5p, IP67

Fuse:

- 2 C-type MCBs 16A, 1p
- 1 C-type MCB 16A, 3p
- 1 C-type MCB 32A, 3p
- 1 RCCB 40/0.03A, 4p

Cable entry at top and bottom:

- each with 1x M12, 1x M20, 2x M40

Connection option:

- 2 cables up to 5 x 25 mm²

VARIABOX-XL

IP67 - 520 x 230 mm


Order no. **896378**
Components:

- 1 CEE socket 16A, 400V, 5p, IP44 nickel plated contacts, with mechanical interlocking, lockable in 0-position
- 1 CEE socket 32A, 400V, 5p, IP44 nickel plated contacts, with mechanical interlocking, lockable in 0-position

Fuse:

- 1 C-type MCB 16A, 3p
- 1 C-type MCB 32A, 3p
- 1 RCCB 40/0.03A, 4p

Cable entry at top and bottom:

- each with 1x M12, 1x M20, 2x M40

Connection option:

- 2 cables up to 5 x 25 mm²

VARIABOX-L

IP44 - 390 x 230 mm



- Housing material: high quality solid rubber or high quality plastic
- Wired ready for connection

Order no. **5401884**

Components:

6 domestic sockets 16A, 230V ~
(type F - Germany)

Fuse:

6 C-type MCBs 16A, 1p
1 RCCB 40/0.03A, 4p

Cable entry at top and bottom:
each with 2x M40

Connection option:

2 cables up to 5 x 25 mm²

MODBOX®-Midi

384 x 255 mm, rubber



Order no. **5401274**

Components:

2 domestic sockets 16A, 230V ~
(type F - Germany)
1 CEE socket 16A, 400V, 5p
1 CEE socket 32A, 400V, 5p

Fuse:

2 C-type MCBs 16A, 1p
1 C-type MCB 16A, 3p
1 C-type MCB 32A, 3p
1 RCCB 63/0.03A, 4p

Cable entry at top and bottom:
each with 2x M40

Connection option:

2 cables up to 5 x 25 mm²

MODBOX®

420 x 300 mm, rubber



Order no. **522590**

Components:

6 domestic sockets 16A, 230V ~
(type F - Germany)
2 CEE sockets 16A, 400V, 5p
1 CEE socket 32A, 400V, 5p
1 rotary field measuring device

Fuse:

3 C-type MCBs 16A, 1p
1 C-type MCB 16A, 3p
1 RCCB 40/0.03A, 4p

Cable entry/inlet:

CEE phase inverter 32A, 400V, 5p

Mobile combination unit
250 x 210 mm - portable, rubber



Order no. **5202245**

Components:

4 domestic sockets 16A, 230V ~
(type F - Germany)
2 CEE sockets 16A, 400V, 5p
2 CEE sockets 32A, 400V, 5p

Fuse:

2 C-type MCBs 16A, 1p
2 C-type MCBs 16A, 3p
2 C-type MCBs 32A, 3p
1 RCCB 63/0.03A, 4p

Cable entry/inlet:

CEE plug 63A, 400V, 5p with
cable 3 m H07RN-F5G10

Mobile combination unit
320 x 245 mm - portable, rubber



Order no. **57148**

Components:

2 domestic sockets 16A, 230V ~
(type F - Germany)
2 CEE sockets 16A, 400V, 5p

Cable entry/inlet:

CEE plug 16A, 400V, 5p with
cable 2 m H07RN-F5G2,5

Uni-Block
140 x 140 mm - portable, rubber



Order no. **57076**

Components:

3 domestic sockets 16A, 230V ~
(type F - Germany)
1 CEE socket 16A, 400V, 5p

Cable entry:

1x M25

Connection option:

1 cable up to 5 x 10 mm²

Uni-Block
140 x 140 mm - hanging, rubber



Order no. **530003**

Components:

2 domestic sockets 16A, 230V ~
(type F - Germany)
1 CEE socket 16A, 400V, 5p

Fuse:

2 C-type MCBs 16A, 1p
1 RCCB 40/0.03A, 4p

Cable entry/inlet:

CEE plug 16A, 400V, 5p with
cable 2 m H07RN-F5G2,5

Mobile combination unit
365 x 120 mm, portable, rubber



Order no. **546**

Components:

3 CEE socket 16A, 400V, 5p

Cable entry/inlet:

CEE inlet 16A, 400V, 5p

Hanging distributor unit
118 x 118 mm, hanging, plastic



Technical Informations

- Housing material: hard polyethylene
- Wired ready for connection

Order no. **5202999**
Components:

6 domestic sockets 16A, 230V ~, IP54 (type F - Germany)
2 CEE socket 16A, 400V, 5p, IP54

Fuse:

6 C-type MCBs 16A, 1p
1 C-type MCB 16A, 3p
1 RCCB 40/0.03A, 4p

Additional components:

1 Phasesignal, LED grün
1 Earthbolt, outside

Cable entry/inlet:

1 CEE inlet 16A, 400V, 5p



340 x 400 x 350 mm


Order no. **5203000**
Components:

9 domestic sockets 16A, 230V ~, IP54 (type F - Germany)
3 CEE socket 16A, 400V, 5p, IP54
1 CEE socket 32A, 400V, 5p, IP54

Fuse:

9 C-type MCBs 16A, 1p
3 C-type MCBs 16A, 3p
1 RCCB 40/0.03A, 4p

Additional components:

1 Phasesignal, LED grün
1 Earthbolt, outside

Cable entry/inlet:

1 CEE inlet 32A, 400V, 5p



340 x 560 x 350 mm


Order no. **5203001**
Components:

9 domestic sockets 16A, 230V ~, IP54 (type F - Germany)
4 CEE socket 16A, 400V, 5p, IP54
2 CEE socket 32A, 400V, 5p, IP54
1 CEE socket 63A, 400V, 5p, IP54

Fuse:

9 C-type MCBs 16A, 1p
2 C-type MCBs 32A, 3p
4 C-type MCBs 16A, 3p
3 RCCB 63/0.03A, 4p

Additional components:

1 Phasesignal, LED grün
1 Earthbolt, outside

Cable entry/inlet:

1 CEE inlet 63A, 400V, 5p



545 x 600 x 400 mm


Order no. **5203002**
Components:

9 domestic sockets 16A, 230V ~, IP54 (type F - Germany)
4 CEE socket 16A, 400V, 5p, IP54
4 CEE socket 32A, 400V, 5p, IP54
2 CEE socket 63A, 400V, 5p, IP54
1 CEE socket 125A, 400V, 5p, IP54

Fuse:

9 C-type MCBs 16A, 1p
4 C-type MCBs 32A, 3p
4 C-type MCBs 16A, 3p
2 C-type MCBs 63A, 3p
4 RCCB 63/0.03A, 4p
2 RCCB 63/0.5A, 4p

Additional components:

1 Phasesignal, LED green
1 Earthbolt, outside

Cable entry/inlet:

1 CEE inlet 125A, 400V, 5p



700 x 600 x 400 mm



 made
 in
 Germany



Simply. Well. Connected.

Bals Elektrotechnik GmbH & Co. KG
D-57399 Kirchhundem-Albaum
Phone: +49 27 23/771-0
Fax: +49 27 23/771-177/178
E-mail: info@bals.com
Internet: www.bals.com

Subject to technical modifications and typographical errors