

Event Technology



About half a century competence and experience

Bals stands worldwide as a quality brand for innovation, reliability and service. For more than 60 years, we have been producing CEE plugs and connectors for the world markets. From day one we have focussed on the highest level of quality "Made in Germany". Our factories in Kirchhundem-Albaum, Würdinghausen and Freiwalde have highly skilled and motivated teams, the very latest manufac-

turing facilities and a highly efficient logistics system.

Our product portfolio ranges from plugs, phase inverters, connectors, sockets outlets and combinations units to charging plugs and sockets for electrical vehicles. Numerous certifications from German and foreign certification institutes, as well as registered designs and patents, document the high technical standard of our products.



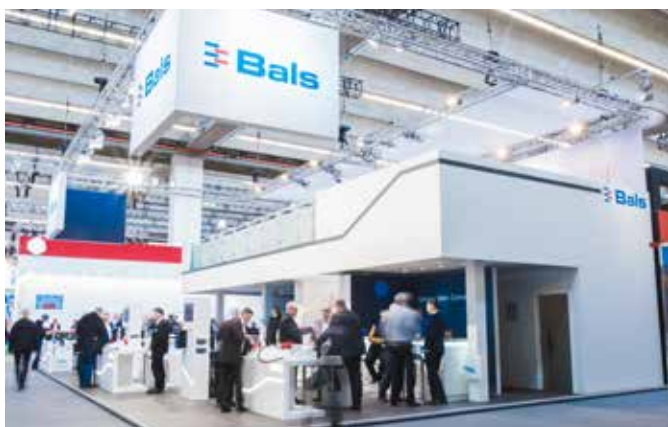
Three modern factories a consistent quality standard

From the beginning the headquarters of our company is located in Kirchhundem-Albaum (North-Rhine-Westphalia). Product development, marketing and sales, as well as administration are located here. In addition, plug and socket systems and special products are manufactured in the Kirchhundem-Albaum factory. The factory in Freiwalde (Brandenburg), built in 1994 and expanded many times since, has state-of-the-art production facilities for fully-automatic manufacturing of unique CEE plugs and connectors as well as a highly-effective logistics centre. Our plant in Würdinghausen is brand new, this is where the components for Emobility are manufactured. Our training center is located in the adjoining building.



CEE plugs and connectors for the world market

As an independent, medium-sized, family-owned company, we produce standardised industrial plugs and sockets acc. to IEC 60309 1-2 as well as plug and socket systems, distributors and components for the infrastructure of electrical vehicles. We set new technical standards with innovations and ground-breaking, partially patented new developments such as MULTI-GRIP or QUICK-CONNECT. The export rate in excess of 50 percent shows: Our solutions are highly valued around the world. Our products are sold in more than 80 countries. Subsidiaries and exclusive partners in strategically important countries only sell our products.



Customer proximity: You can rely on us

Always close to the customers. For us, this is no empty phrase but reality. Flexibility, customer orientation and the ability to quickly respond to short-term requirements are a matter of course for us. For this reason, integrated production - from the product idea and design to tool making and production to the shipment of the products - is optimised for short processing paths and the fastest response times.

Panel Mounting Socket Outlet QUICK-CONNECT

- Screwless terminals
- Kontex contact
- Nickel plated contacts
- Flange 75 x 75 mm
- Protection degree IP44

QUICK CONNECT

130274



2P+E Ampere	3P+E Poles	230V 50-60 Hz	400V 50-60 Hz	Quantity	Each
		3pol 4pol 5pol 6h 9h 9h	3pol 4pol 5pol 9h 6h 6h		
16	3	130269		10	110
16	4		130270	10	150
16	5		130271	10	170
32	3	130272		10	190
32	4		130273	10	205
32	5		130274	10	225

Panel Mounting Socket Outlet

- Screw terminals
- Flange 107 x 100 mm
- Kontex contact
- Nickel plated contacts
- Box terminals
- Protection degree IP44

130276



2P+E Ampere	3P+E Poles	230V 50-60 Hz	400V 50-60 Hz	Quantity	Each
		3pol 4pol 5pol 6h 9h 9h	3pol 4pol 5pol 9h 6h 6h		
63	3	130275		5	415
63	5		130276	5	490

Panel Mounting Socket Outlet

- Screw terminals
- Flange 107 x 100 mm
- Kontex contact
- Nickel plated contacts
- Box terminals
- Protection degree IP67

130276



2P+E Ampere	3P+E Poles	230V 50-60 Hz	400V 50-60 Hz	Quantity	Each
		3pol 4pol 5pol 6h 9h 9h	3pol 4pol 5pol 9h 6h 6h		
63	3	130315		5	415
63	5		130196	5	570

Panel Mounting Socket QUICK-CONNECT

- Screwless terminals
- 20° angled
- Kontex contact
- Nickel plated contacts
- Flange 85 x 85 mm
- Protection degree IP44

QUICK CONNECT

120441



2P+E Ampere	3P+E Poles	230V 50-60 Hz	400V 50-60 Hz	Quantity	Each
		3pol 4pol 5pol 6h 9h 9h	3pol 4pol 5pol 9h 6h 6h		
16	3	120436		10	120
16	4		120437	10	140
16	5		120438	10	145
32	3	120439		10	200
32	4		120440	10	230
32	5		120441	10	265

Plug INNOLINQ

- Screwless terminals
- Screwless enclosure connection, self locking
- Special gland, simultaneous cable gland and seal
- Protection degree IP54
- Contact carrier is made of high temperature resistant material
- Contains no lead

QUICK CONNECT
KONTEX ULTRA
MULTI GRIP



2P+E Ampere	3P+E Poles	230V 50-60 Hz	400V 50-60 Hz	Quantity	Each
		3pol 4pol 5pol 6h 9h 9h	3pol 4pol 5pol 9h 6h 6h		
16	3	211174		10	
16	4		211175	10	
16	5		211176	10	
32	3	211171		10	
32	4		211172	10	
32	5		211173	10	

Plug TE with MULTI-GRIP

- Screw terminals
- Box terminals
- High-temperature-resistant contact carrier
- Nickel plated contacts
- Enclosure connection with thread and snap-in lock
- Special gland, simultaneous cable gland and seal
- Protection degree IP44

 **MULTI GRIP**

210792



2P+E Ampere	3P+E Poles	230V 50-60 Hz			400V 50-60 Hz			Quantity	Each
		3pol 6h	4pol 9h	5pol 9h	3pol 9h	4pol 6h	5pol 6h		
63	3	210735						5	535
63	4				211102			5	595
63	5				210792			5	650

Plug TE with MULTI-GRIP

- Screw terminals
- Box terminals
- High-temperature-resistant contact carrier
- Nickel plated contacts
- Screwless enclosure connection, snap-in lock
- Special gland, simultaneous cable gland and seal
- Protection degree IP67

 **MULTI GRIP**

210711



2P+E Ampere	3P+E Poles	230V 50-60 Hz			400V 50-60 Hz			Quantity	Each
		3pol 6h	4pol 9h	5pol 9h	3pol 9h	4pol 6h	5pol 6h		
63	3	211127						5	535
63	5				210710			5	715
125	5				210711			5	1235

Appliance Inlet QUICK-CONNECT with Flange

- Screwless terminals
- Kontex contact
- Nickel plated contacts
- Flange 75 x 75 mm
- Protection degree IP44

 **QUICK CONNECT**


28298



2P+E Ampere	3P+E Poles	230V 50-60 Hz			400V 50-60 Hz			Quantity	Each
		3pol 6h	4pol 9h	5pol 9h	3pol 9h	4pol 6h	5pol 6h		
16	3	28312						10	90
16	4				28313			10	105
16	5				28314			10	125
32	3	28315						10	145
32	4				28316			10	165
32	5				28298			10	195

Connector INNOLINQ

- Screwless terminals
- Screwless enclosure connection, self locking
- Special gland, simultaneous cable gland and seal
- Protection degree IP54
- Contact carrier is made of high temperature resistant material
- Contains no lead

 **QUICK CONNECT**
 **KONTEX ULTRA**
 **MULTI GRIP**

310829



2P+E Ampere	3P+E Poles	230V 50-60 Hz			400V 50-60 Hz			Quantity	Each
		3pol 6h	4pol 9h	5pol 9h	3pol 9h	4pol 6h	5pol 6h		
16	3	310827						10	120
16	4				310828			10	160
16	5				310829			10	165
32	3	310824						10	240
32	4				310825			10	260
32	5				310826			10	300

Connector with MULTI-GRIP

- Screw terminals
- Box terminals
- High-temperature-resistant contact carrier
- Kontex contact
- Nickel plated contacts
- Screwless enclosure connection, snap-in lock
- Special gland, simultaneous cable gland and seal
- Protection degree IP44

 **MULTI GRIP**

310518



2P+E Ampere	3P+E Poles	230V 50-60 Hz			400V 50-60 Hz			Quantity	Each
		3pol 6h	4pol 9h	5pol 9h	3pol 9h	4pol 6h	5pol 6h		
63	3	310488						5	590
63	4				310749			5	630
63	5				310518			5	670

Connector with MULTI-GRIP

- Screw terminals
- Box terminals
- High-temperature-resistant contact carrier
- Kontex contact
- Nickel plated contacts
- Enclosure connection with thread and snap-in lock
- Special gland, simultaneous cable gland and seal
- Protection degree IP67

MULTI GRIP

310466



2P+E Ampere	3P+E Poles	230V 50-60 Hz	400V 50-60 Hz	Quantity	Each
63	3	310771		5	650
63	5		310465	5	725
125	5		310466	5	1300

Cable Gland MULTI-GRIP with Additional Strain Relief

- In black for plugs and connectors with MULTI-GRIP cable gland

MULTI GRIP

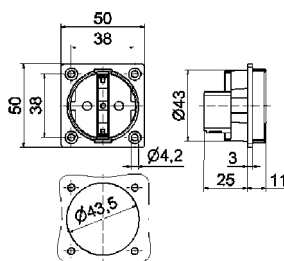


Ref. no.
for 16A / 3p, 4p TE + TE Plus
16A / 3p, 4p, 5p QC + TLS
29951
for 16A / 5p TE + TE Plus
29151
for 32A / 5p TE + TE Plus
29152
for 63A / 3p, 4p, 5p TE + TE Plus
29153
for 125A / 3p, 4p, 5p TE
29154

Domestic Panel Mounting Socket Outlet

- 16A 250V ~
- Screw terminals
- Nickel plated contacts
- Without hinged lid
- Connection at rear
- Protection degree IP20

714



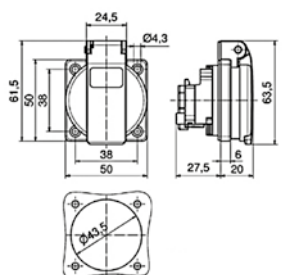
18 MB 1

Color	Ref. no.	Qty
black	714	20

Domestic Panel Mounting Socket Outlet stationary use

- 16A 250V ~
- Screwless terminals
- Nickel plated contacts
- With moulded flange seal
- Flange 50 x 50 mm
- Mounting dimension 38 x 38 mm
- Connection terminal in accordance with BGV A2
- Polyamide 6 contact carrier
- Protection degree IP54

71101



18 MB 102

Color	Ref. no.	Qty
black	71101	20

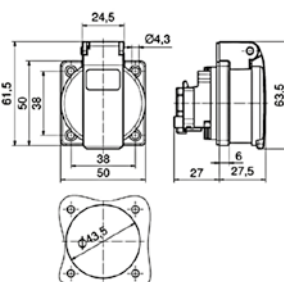
Screw term.	black	71097	20
-------------	-------	--------------	----

Domestic Panel Mounting Socket Outlet mobile use

- 16A 250V ~
- Screwless terminals
- Nickel plated contacts
- With moulded flange seal
- according to DIN/VDE 620/1 for portable distribution systems
- Protection degree IP54

QUICK CONNECT

71104



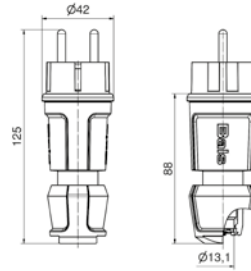
18 MB 104

Color	Ref. no.	Qty
black	71104	20

Screw term.	black	71097	20
-------------	-------	--------------	----

Domestic Plug

- With MULTI-GRIP cable gland
- Spacious connection area
- Also suitable for Belgian/French system
- Protection degree IP44



Color Ref. no.



Qty

black **7372**

20

MULTI GRIP

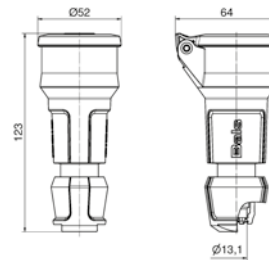
7372

18 MB 119

Domestic Connector

- With Multi-Grip cable gland
- Spacious connection area
- Protection degree IP54

In the case of Domestic Connectors with increased contact protect add **09** to the end of the order number.



Color Ref. no.



Qty

black **7488**

20

MULTI GRIP

7488

18 MB 120

Solid-Rubber Enclosures**Components:**

6 Domestic sockets 16A, 230V ~ (system F - German earthing System)

Cable entry / Input:

Cable gland M20

Order no.

530598 with blue domestic sockets

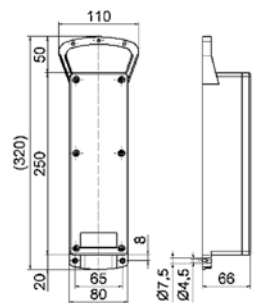
530599 with black domestic sockets



530598



530599



13 MB 57

Solid-Rubber Enclosures**Components:**

6 Domestic sockets 16A, 230V ~ (system F - German earthing System)

Cable entry/Input:

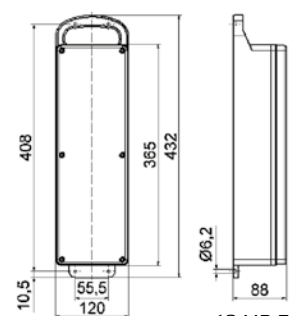
CEE plug 32A, 400V, 5p with lead 1,8 m H07RN-F5G6

Order no.

530596 with 6 D-type MCBs 16A, 1p

530597 with 6 C-type MCBs 16A, 1p

530596



13 MB 7

On Request

- Extension lead
- Cable gland MULTI-GRIP with additional strain Relief



The mobile distributor generation

The new EVOBOX series is the ideal solution for mobile power supply in industry, on construction sites or in event technology.

Product information

- Available in 4 coordinated housing sizes
- Perfectly stackable
- Easy-to-handle, using integrated carrying grips
- No protruding components
- fuse elements under transparent operating windows
- Distributor outlets and fuse elements each separately on one side
- Ready wired for installation
- The internal wiring is designed for the highest possible safety via the specification standard
- Resistant to ageing and weather
- Lightweight and impact resistant through the use of hard-polyethylene

Product details

- Impact strength IK10, up to 20J impact energy
- Self-extinguishing and UV-stabilized
- Highly resistant thermally and mechanically
- Maintenance-free QUICK-CONNECT-technology for CEE up to 63A and domestic sockets
- Overall protection degree of the distributor is IP54
- Flexible fitting options up to 125A

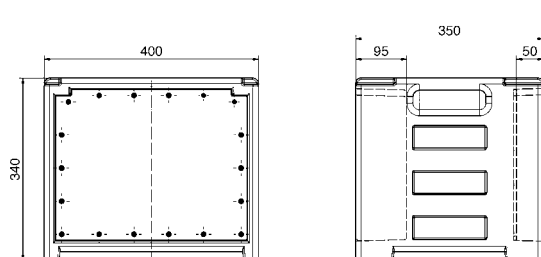
The portable distributor series is available in 4 coordinated housing sizes and impresses with its high mechanical and thermal capacity.

Optional

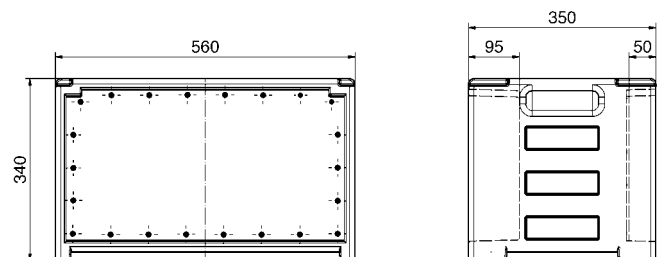
- Adapted arrangement of panel mounting sockets for plugs with protection degree IP67
- Phase control lights are easily visible under operating windows
- External earthing screw outside the housing
- Installation of overvoltage protection
- The housing can be blue, red and orange (minimum order quantity)
- all panel mounting socket outlets are available in black

Power supply

- Cable entry with CEE plug up to max. 125A
- CEE inlet up to max. 125A



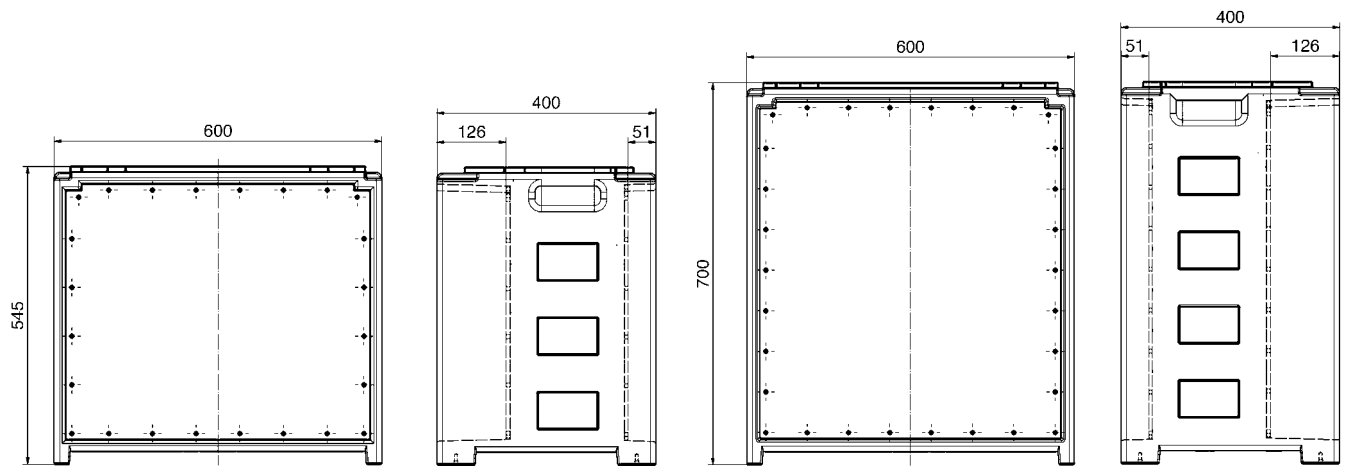
 **EVOBOX-S**



 **EVOBOX-M**



The 4 coordinated housing sizes



 **EVOBOX-L**

 **EVOBOX-XL**

One distributor - many areas of application

The mobile distributor generation **EVOBOX**, customized, depending on the area of application.



Components:

6 domestic sockets 16A, 230V, IP54
(Type F - German standard)
2 CEE sockets 16A, 400V, 5p, 6h, IP54

Fuse:

6 C-type MCBs 16A, 1p
1 C-type MCB 16A, 3p
1 RCCB 40/0,03A, 4p

Additional equipment:

1 phase control light, LED green
1 external earthing screw

Input:

1 CEE inlet 16A, 400V, 5p, 6h, IP67

Ref. no. **5202999**

EVOBOX-S



Components:

9 domestic sockets 16A, 230V, IP54
(Type F - German standard)
3 CEE sockets 16A, 400V, 5p, 6h, IP54
1 CEE socket 32A, 400V, 5p, 6h, IP54

Fuse:

9 C-type MCBs 16A, 1p
3 C-type MCBs 16A, 3p
1 RCCB 40/0,03A, 4p

Additional equipment:

1 phase control light, LED green
1 external earthing screw

Input:

1 CEE inlet 32A, 400V, 5p, 6h, IP67

Ref. no. **5203000**

EVOBOX-M



Components:

9 domestic sockets 16A, 230V, IP54
(Type F - German standard)
4 CEE sockets 16A, 400V, 5p, 6h, IP54
2 CEE sockets 32A, 400V, 5p, 6h, IP54
1 CEE socket 63A, 400V, 5p, 6h, IP67

Fuse:

9 C-type MCBs 16A, 1p
4 C-type MCBs 16A, 3p
2 C-type MCBs 32A, 3p
3 RCCBs 63/0,03A, 4p

Additional equipment:

1 phase control light, LED green
1 external earthing screw

Input:

1 CEE inlet 63A, 400V, 5p, 6h, IP67

Ref. no. **5203001**

EVOBOX-L



Components:

9 domestic sockets 16A, 230V, IP54
(Type F - German standard)
4 CEE sockets 16A, 400V, 5p, 6h, IP54
4 CEE sockets 32A, 400V, 5p, 6h, IP54
2 CEE sockets 63A, 400V, 5p, 6h, IP67
1 CEE socket 125A, 400V, 5p, 6h, IP67

Fuse:

9 C-type MCBs 16A, 1p
4 C-type MCBs 16A, 3p
4 C-type MCBs 32A, 3p
2 C-type MCBs 63A, 3p
4 RCCBs 63/0,03A, 4p
2 RCCBs 63/0,5A, 4p

Additional equipment:

1 phase control light, LED green
1 external earthing screw

Input:

1 CEE inlet 125A, 400V, 5p, 6h, IP67

Ref. no. **5203002**

EVOBOX-XL



 made
 in
 Germany



Simply. Well. Connected.

Bals Elektrotechnik GmbH & Co. KG
D-57399 Kirchhundem-Albaum
Phone: +49 27 23/771-0
Fax: +49 27 23/771-177/178
E-mail: info@bals.com
Internet: www.bals.com

Subject to technical modifications and typographical errors